

# Climate Action Plan



**All Saints Church School**



# CLIMATE ACTION PLAN



At All Saints Church School, we believe that small actions can lead to big changes, and we're excited to take steps toward a greener, more sustainable future. Our Climate Action Plan is all about creating a positive impact on the environment while inspiring our students, staff, and families to work together for a cleaner, healthier world.

From reducing waste to saving energy, we are committed to making eco-friendly choices that will benefit not only our school but the community around us. By embracing these efforts, we hope to encourage everyone at All Saints Church School to become climate champions and help build a brighter, more sustainable tomorrow.

## SUMMARY

Not started: 34 items





Section

# DECARBONISATION

## DELIVER SOME LESSONS OUTSIDE

Outdoor lessons provide pupils with fresh air and a change of scenery while reducing reliance on indoor lighting and heating. Whether it's reading in a shaded area, conducting science experiments outside, or using school gardens for hands-on learning, outdoor education fosters engagement and sustainability awareness.

**NOT STARTED**

## INSTALL LED LIGHTING

LED lighting is a cost-effective and energy-efficient alternative to traditional incandescent and fluorescent bulbs. By switching to LED lighting, schools can significantly reduce electricity consumption and maintenance costs while lowering their carbon footprint. LED bulbs also generate less heat, improving classroom comfort and reducing the need for air conditioning.

**NOT STARTED**





Section

# DECARBONISATION

## INSTALL MOTION SENSORS TO LIGHTS

Motion sensors automatically turn lights on and off depending on occupancy. By installing these in classrooms, hallways, and restrooms, schools can significantly cut down on wasted electricity. This ensures that lights are only used when needed, reducing overall energy consumption.

**NOT STARTED**

## RUN A SWITCH OFF CAMPAIGN

A switch-off campaign raises awareness about energy consumption and encourages simple behavioural changes to reduce waste. Schools can run competitions, put up reminder posters, and conduct audits to track energy savings. Engaging pupils through classroom discussions and real-time energy monitoring can make energy efficiency a long-term habit.

**NOT STARTED**





Section

# DECARBONISATION

## TRAVEL SURVEY

A travel survey helps schools gather data on pupil and staff commuting habits. By understanding travel patterns, schools can identify opportunities to encourage more sustainable travel options such as walking, cycling, carpooling, or using public transport. This information can support decisions on bike rack installations, road safety improvements, and incentive programs for eco-friendly commuting.

**NOT STARTED**

## UPGRADE ELECTRICAL APPLIANCES TO ENERGY-EFFICIENT ALTERNATIVES

Schools can significantly reduce electricity consumption by upgrading to energy-efficient appliances, including LED lighting, low-energy projectors, and efficient kitchen equipment. Energy Star-rated devices and appliances use less power, lowering operational costs and environmental impact. Schools should prioritise replacing older, inefficient devices first to maximise savings.

**NOT STARTED**



Section

# ADAPTATION & RESILIENCE

## AUDIT AND REDUCE SINGLE-USE PLASTICS

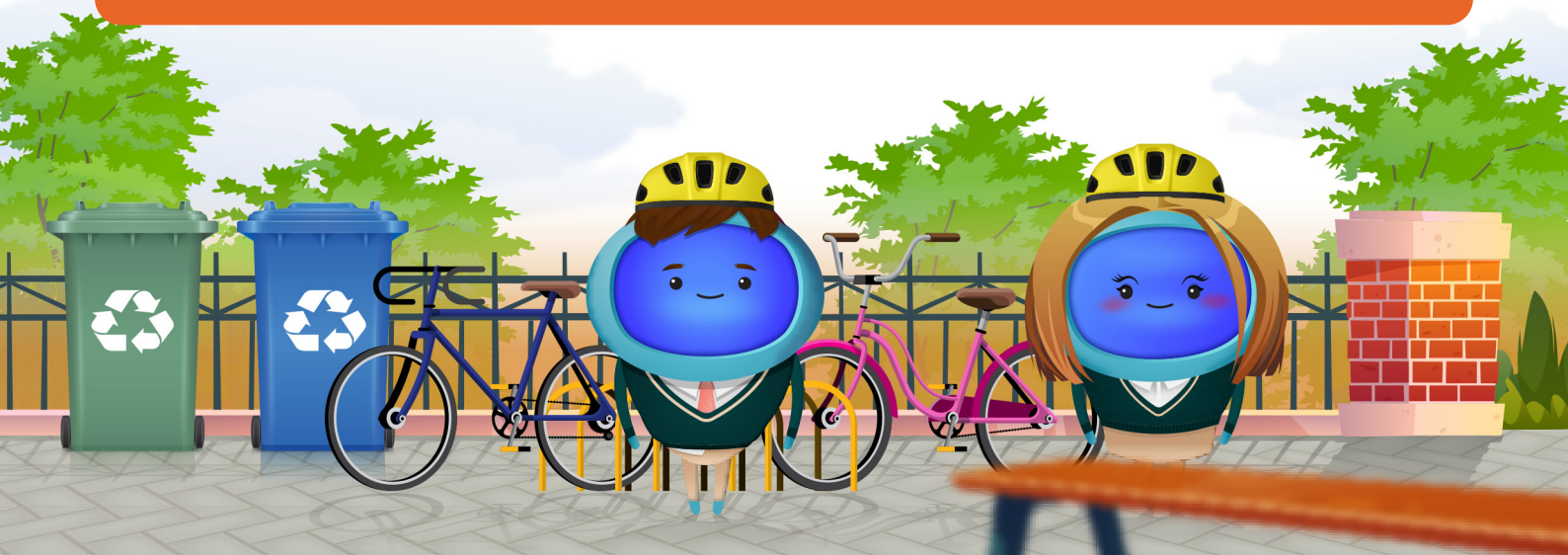
Schools can conduct an audit of their plastic use, identifying areas where single-use plastics can be eliminated or replaced with sustainable alternatives. This includes plastic cutlery, straws, and packaging materials. Encouraging the use of reusable water bottles and lunch containers can also contribute to waste reduction.

**NOT STARTED**

## CREATE A HEATWAVE HEALTH AND SAFETY ASSESSMENT

As heatwaves become more common due to climate change, schools must ensure the wellbeing of pupils and staff during extreme temperatures. A heatwave health and safety assessment should include installing shaded seating areas, increasing hydration points, improving ventilation, and adjusting schedules during hot weather. Proactive planning helps prevent heat-related illnesses while fostering a healthier, more resilient learning environment.

**NOT STARTED**



Section

# ADAPTATION & RESILIENCE

## CREATE A SCHOOL COMMUNITY GARDEN FOR FOOD RESILIENCE

Establishing a community garden allows schools to grow their own fruits and vegetables, reducing reliance on external food sources. This initiative provides hands-on sustainability education, promotes healthy eating, and fosters a sense of community among pupils and staff.

**NOT STARTED**

## DEVELOP A WATER CONSERVATION STRATEGY

Schools can adopt water-saving measures such as dual-flush toilets, drought-resistant landscaping, and leak monitoring systems. Educating students on responsible water use can further enhance conservation efforts.

**NOT STARTED**



Section

# ADAPTATION & RESILIENCE

## INSTALL WATER BUTTS

Water butts allow schools to collect and store rainwater, reducing dependence on mains water for irrigation, cleaning, and other non-drinking purposes. This initiative helps conserve water, cut utility costs, and educate pupils on sustainable water management practices. Schools implementing water butts can use them to water gardens, supply outdoor play areas, and even contribute to science lessons on water conservation.

**NOT STARTED**

## PLAN A SCHOOL-WIDE ENERGY REDUCTION CHALLENGE

Engaging pupils and staff in an energy-saving challenge builds awareness and encourages sustainable habits. Schools can track electricity consumption and reward classrooms that achieve the highest reductions.

**NOT STARTED**



Section

# ADAPTATION & RESILIENCE

## PLANT TREES TO CREATE SHADED AREAS

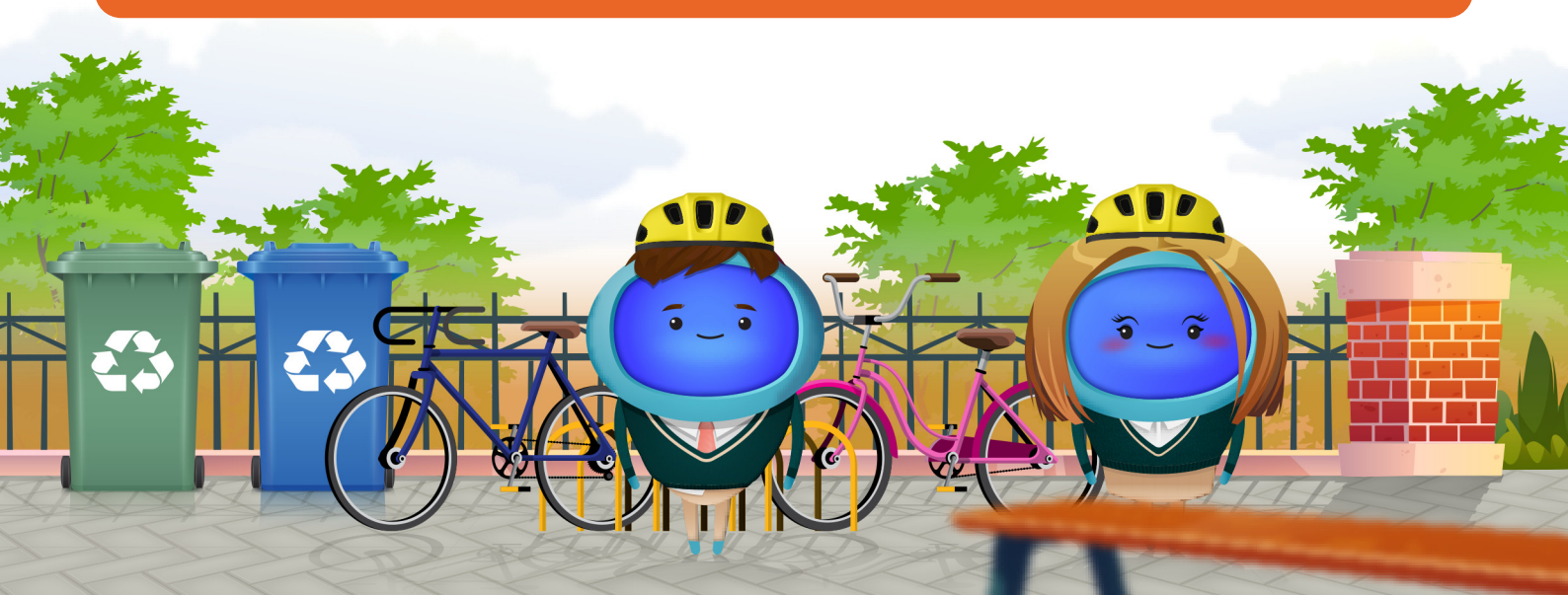
Planting trees strategically around the school campus provides natural cooling, reducing the need for artificial cooling systems during hot months. Trees also improve air quality by filtering pollutants, enhance biodiversity by providing habitats for birds and insects, and create inviting outdoor learning spaces. As they grow, trees contribute to carbon sequestration, offsetting a portion of the school's emissions while simultaneously improving pupil wellbeing.

**NOT STARTED**

## SET UP A SCHOOL RESILIENCE COMMITTEE

Establishing a resilience committee ensures ongoing adaptation to environmental challenges. This team, composed of pupils, staff, and community members, can assess risks, implement sustainability policies, and coordinate resilience projects. Regular meetings will help track progress and adjust strategies as needed.

**NOT STARTED**



Section

# ADAPTATION & RESILIENCE

## SOURCE CLEANING PRODUCTS WITH ECO-CERTIFICATIONS.

Traditional cleaning products contain harmful chemicals that can pollute water and air. Schools can transition to eco-friendly alternatives certified by environmental agencies, reducing exposure to toxins and supporting sustainability efforts.

**NOT STARTED**



Section

# BIODIVERSITY

## BUILD A SCHOOL POND FOR WILDLIFE

School ponds provide essential habitats for amphibians, insects, and birds, improving local biodiversity. They also offer a hands-on educational resource for pupils to study aquatic ecosystems, life cycles, and conservation. Proper maintenance ensures the pond remains a thriving habitat.

**NOT STARTED**

## BUILD AN INSECT HOTEL

Log piles and disused wood pallets can be used to create a natural habitat for insects, amphibians, and fungi, enhancing biodiversity and promoting decomposition processes. They can be strategically placed in school gardens to serve as learning tools for ecology studies.

**NOT STARTED**





Section

# BIODIVERSITY

## CARRY OUT A NATURE SURVEY

Schools can conduct nature surveys to document the species of plants, insects, and animals found on school grounds. This information can help identify areas for biodiversity improvement, such as adding nesting boxes, planting native species, or reducing pesticide use. Engaging pupils in biodiversity monitoring promotes conservation awareness and scientific curiosity.

**NOT STARTED**

## CREATE A HERB GARDEN FOR THE KITCHEN TO USE

Schools can create herb gardens to supply fresh ingredients for the kitchen, reducing the need for store-bought herbs and promoting sustainable food practices. Pupils can be involved in growing and maintaining the garden, learning valuable gardening and nutrition skills. Herb gardens also attract pollinators, supporting local biodiversity.

**NOT STARTED**



Section

# BIODIVERSITY

## CREATE A SCHOOL POLLINATOR GARDEN

A school pollinator garden provides a habitat for bees, butterflies, and other beneficial insects. By planting native wildflowers and nectar-rich plants, schools can contribute to biodiversity and support local ecosystems. These gardens also serve as valuable outdoor learning spaces where pupils can observe pollination in action and learn about the role of insects in food production.

**NOT STARTED**

## INCREASE GREEN SPACE

Schools can transform unused or paved areas into green spaces by planting native plants, installing grass patches, or creating small gardens. Increasing green space improves air quality, provides habitats for wildlife, and creates healthier environments for students. Green spaces can also serve as outdoor learning areas, promoting environmental education.

**NOT STARTED**





Section

# BIODIVERSITY

## JOIN COMMUNITY INITIATIVES

Community environmental initiatives such as tree planting, litter picking, or local green space protection projects can provide excellent opportunities for pupils and staff to make a positive impact on their local environment. These initiatives also help build a culture of sustainability within your school or MAT.

**NOT STARTED**

## PARTICIPATE IN THE RSPB BIRDWATCH

Schools can engage pupils in the Royal Society for the Protection of Birds (RSPB) Birdwatch, an annual citizen science event where participants record and report bird sightings. This initiative helps develop observation skills, raises awareness of biodiversity, and contributes valuable data for conservation efforts. Schools can integrate this activity into science and geography lessons to reinforce learning.

**NOT STARTED**





Section

# BIODIVERSITY

## SIGN YOUR SCHOOL UP TO EDUCATION NATURE PARK

Schools can participate in local or national education nature park programs to connect pupils with nature-based learning experiences. These programs provide hands-on engagement with biodiversity, conservation, and sustainability. By participating, pupils gain a deeper appreciation of the environment, and schools can access valuable teaching resources and support for outdoor learning initiatives.

**NOT STARTED**

## START A GARDENING CLUB

A gardening club provides pupils with hands-on experience in growing flowers, vegetables, and trees, while also teaching them about sustainability, soil health, and biodiversity. Gardening improves mental well-being, fosters teamwork, and enhances outdoor learning opportunities. Schools can use gardens to produce food, beautify the environment, and engage pupils in long-term eco-friendly initiatives.

**NOT STARTED**



Section

# BIODIVERSITY

## WORK WITH THE PUPILS TO GET THEIR VIEWS ON HOW THE SCHOOL SITE SHOULD LOOK

Schools can involve pupils in decision-making about their learning environment, ensuring that sustainability considerations are incorporated. Whether through workshops, surveys, or school councils, pupil input can lead to more effective green space planning, improved outdoor learning areas, and projects that align with their needs and interests. Involving pupils also increases their sense of ownership and responsibility for the school environment.

**NOT STARTED**



Section

# CLIMATE EDUCATION & GREEN SKILLS

## CREATE A 'SUSTAINABILITY IN CAREERS' DAY

By exposing pupils to careers in sustainability, schools can inspire future professionals who prioritise environmental responsibility. This event can feature guest speakers, panel discussions, and interactive workshops showcasing opportunities in renewable energy, environmental policy, and sustainable business practices.

**NOT STARTED**

## CREATE A SCHOOL ECO COMMITTEE

A school eco committee gives pupils the opportunity to lead sustainability projects, influence school policies, and advocate for environmental improvements. This initiative fosters leadership, encourages responsibility, and ensures sustainability remains a core focus in school decision-making.

**NOT STARTED**



Section

# CLIMATE EDUCATION & GREEN SKILLS

## DEVELOP AN OUTDOOR LEARNING PROGRAM FOCUSED ON NATURE

Outdoor learning programs provide pupils with hands-on experiences in nature, teaching them about local ecosystems, biodiversity, and conservation. Schools can create learning gardens, conduct nature walks, or collaborate with conservation groups to enhance pupil engagement with the environment.

**NOT STARTED**

## HOST A SUSTAINABILITY-THEMED ASSEMBLY EACH TERM

Hosting a sustainability-themed assembly each term ensures that pupils remain engaged with environmental topics. These events can feature guest speakers, pupil-led presentations, and school-wide challenges to encourage participation. Assemblies help build a culture of sustainability and reinforce its importance throughout the school community.

**NOT STARTED**



Section

# CLIMATE EDUCATION & GREEN SKILLS

## IMPLEMENT A SUSTAINABLE SCHOOL UNIFORM POLICY

Schools can work with suppliers to source uniforms made from organic, recycled, or ethically produced materials. Encouraging second-hand uniform sales and repair workshops can further reduce waste and environmental impact.

**NOT STARTED**

## INTRODUCE A SUSTAINABILITY LESSON IN EVERY SUBJECT

Embedding sustainability into the curriculum across all subjects helps pupils develop an awareness of environmental issues. Science classes can discuss climate change, geography can cover ecosystems, and mathematics can explore energy consumption statistics. By integrating sustainability into daily learning, pupils can develop a mindset of environmental responsibility and apply these principles beyond the classroom.

**NOT STARTED**



Section

# CLIMATE EDUCATION & GREEN SKILLS

## ORGANISE A PUPIL-LED ENERGY AND WASTE AUDIT

A school-wide audit allows pupils to evaluate energy use and waste production, identifying areas for improvement. This hands-on approach helps pupils understand real-world sustainability challenges and implement practical solutions such as reducing electricity use, recycling more effectively, and cutting down on single-use plastics.

**NOT STARTED**



Section

# CLIMATE EDUCATION & GREEN SKILLS

## PROVIDE STAFF CPD ON EMBEDDING SUSTAINABILITY IN THE CURRICULUM

Schools can offer CPD sessions focused on embedding sustainability across subjects, ensuring that educators have the knowledge and resources to integrate environmental topics effectively. UCL's free Teaching for Sustainable Futures course is available for Geography and History teachers, but training should also support other subjects in incorporating sustainability themes. Ensuring teachers have dedicated time for curriculum development helps make sustainability a lasting part of the school's educational framework.

**NOT STARTED**

